



### CORPORATE OFFICE

No: 24/25, 20<sup>th</sup> R Cross, Bhuvaneshwari Nagar, Hebbal Kempapura,  
Bangalore -560024

**Phone:** 080 22330069 / 8951090556

**Web:** stellarhomes.developers.com

**Email:** stellarbuilders@gmail.com



### SITE ADDRESS

Sy No: 38/2, 38/7, 38/9, 38/12  
M.Shettihalli Village, K.Shettihalli Hobli,  
Srirangapatana Taluk & Mandya District

### Near by Place to visit

#### HISTORICAL PLACES

- Sri Ranganathaswamy Temple - 7.5 kms • Nimishambha Temple - 5.4 kms
- Dariya Daulat Bagh - 6.3 kms • Tippu Sultan Palace - 6.5 kms • Gumbaz - 5.8 kms
- Kari Gatta Temple - 8.3 kms • Srirangapatna Fort - 10 kms • Paschima Vahini - 11 kms
- Triveni Sangam - 11 kms • Ranganathittu Bird Sanctuary - 11 kms • Balmuri Falls - 18 kms
- Kere Thonnur - 19 kms • Mahadevpura - 17kms • KRS Dam - 30 mins
- Mysore Palace - 30 mins • Chamundi Hills - 40 mins

#### OFFICES

- Infosys - 30 mins • Wipro - 30 mins

#### HOSPITALS

- Sri Ranga Hospital - 8.9 kms • Manipal Hospital - 15 mins • Narayan Hospital - 20 mins

#### EDUCATIONAL INSTITUTIONS

- Shri Gurukula NEET & JEE Academy - 4.7 kms • River Valley School & College - 9.2 kms
- Parivarthana School & College - 9.4 kms • De Paul International School - 25 mins
- Mandya Institute of Medical Science - 30 mins
- Cauvery Ayurvedic Medical College - 35 mins





## An Address that fulfils the week end farm house dream

- Being part of a Beautiful village and also 05 minutes away from Bengaluru - Mysuru Express highway not only adds appreciation value and connectivity, but also fulfils the dream of scenic village drive and proximity to all basic needs, social, leisure & health care avenue.



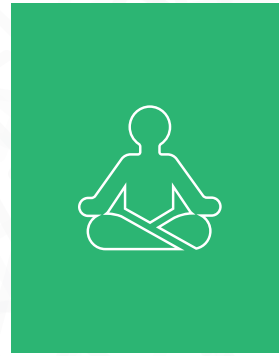
Your Weekends & Holidays are not the same.

- Long drives, family and friends get-together, never ending parties around the camp fire and club house.



Your dream come true Farm House  
- A limited edition Gated Community Farm home.





- CLUB HOUSE.
- FENCING FOR INDIVIDUAL PLOTS.
- ENTRANCE ARCH WITH 24/7 CCTV CAMERA SECURITY SYSTEM.
- GAZEBO.
- WALKING & JOGGING TRACK.
- MEDITATION & YOGA PARK.
- LAND SCAPE GARDENS.
- FISH POND.
- 24/7 WATER & ELECTRICITY.
- GUEST ROOMS.
- PARTY LAWN.
- FIRE CAMP AREA.

